



1035 NORTH
**RIVER
ROAD**



www.rdgroup.ca



MODERN LIVING ON THE RIDEAU RIVER

Welcome to the new urban lifestyle of **1035 North River Rd.** **Three townhomes are being** built facing the Rideau River and parkland close to the new foot bridge to Sandy Hill. Your new home is in the heart of a great family neighbourhood.

Your family will discover everything the location has to offer and the Redevelopment Group will custom build your new home to reflect your personal style. This is a rare opportunity to work with one of Ottawa's premier builders.

The Redevelopment Group believes in sus-

tainable urban development and since 1992 has built more than 200 condos and townhomes, developing unique spaces that reflect each homeowner's personal style, creating homes that reflect the surrounding neighbourhoods and contribute to the vibrant urban communities within which they are built. The homes are under construction for June occupancy.

The quality of designs and materials have always been superior and **1035 North River Rd.** will be a jewel on the street. The modern design and finishes reflect the exciting transformation

taking place in Ottawa.

Standard features include a large front balcony off the living room with unobstructed views of the river and parkland. Private rear balcony off the kitchen, oversized windows, modern ribbon style fireplace, air conditioning, 9' ceilings, maple flooring, porcelain tile, custom trim, granite/quartz counters, under mount and above counter vessel sinks, custom-designed Deslaurier kitchens, designer fixtures and the highest level of quality construction.

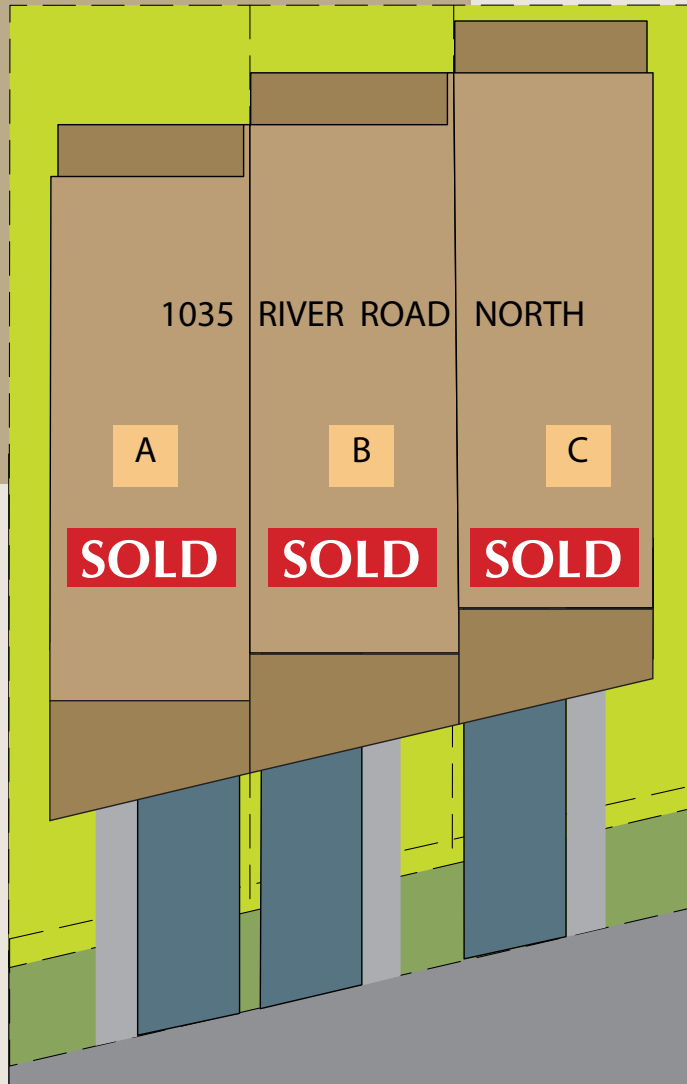
RIVER ROAD LOCATION



View of the park and river from the site

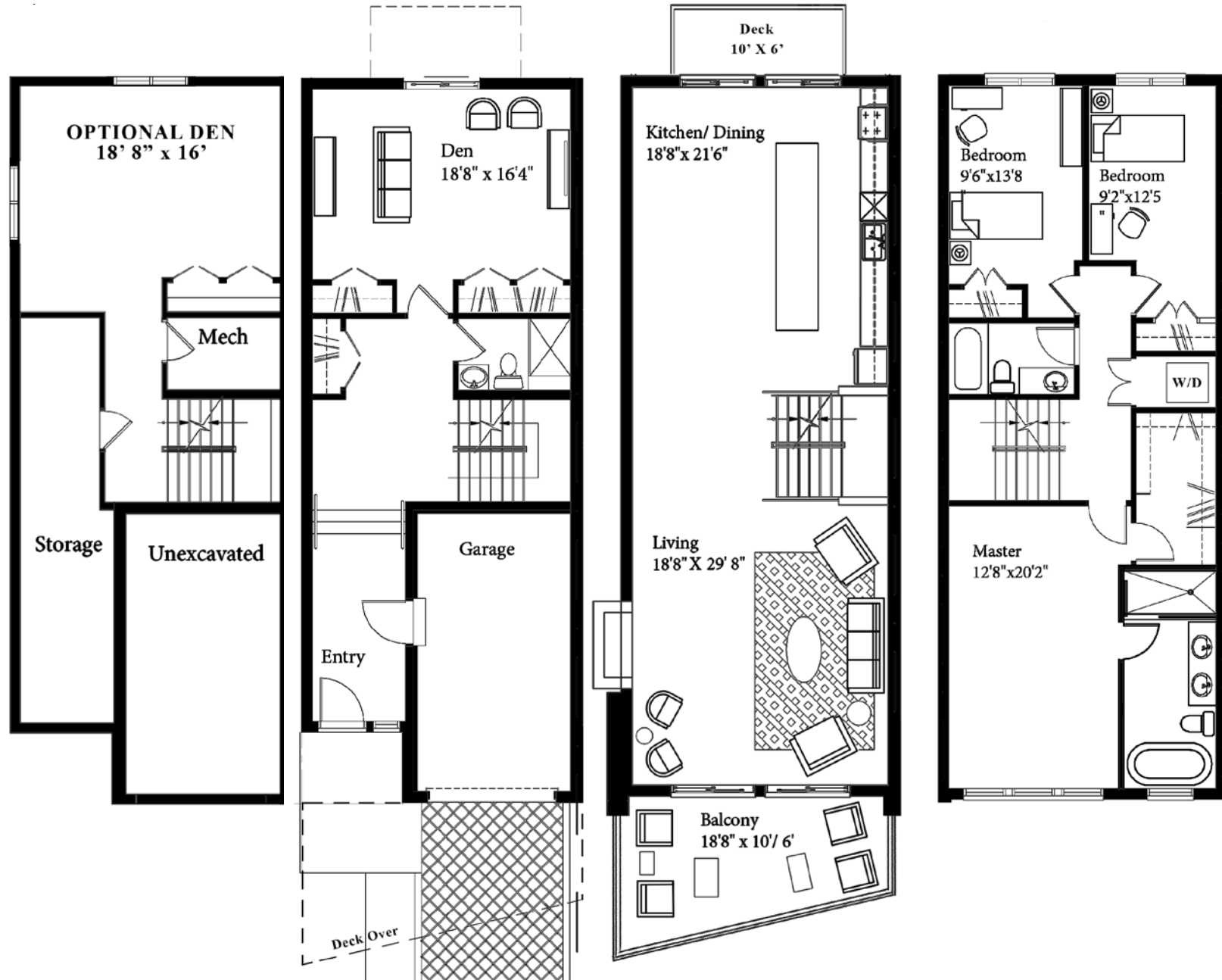
1035 NORTH
**RIVER
ROAD**

ELEVATION AND SITE PLAN



Artist's Concept

RIVER ROAD FLOOR PLAN - UNIT B



BASEMENT

GROUND FLOOR

SECOND FLOOR

THIRD FLOOR



1035 NORTH
**RIVER
ROAD**



www.rdgroupp.ca

FEATURES

INTERIOR FEATURES

- Ribbon style gas fireplace in living room, Napoleon HD 45.
- Stone surround from builder samples.
- Pre-finished maple Hardwood flooring on ground, second and third floor from Builders samples.
- Ceramic flooring in entrance and bathrooms from Builders samples.
- Kitchen custom designed with a Deslaurier Kitchen Designer.
- All bath vanities are modern floating style.
- Granite counters in kitchen and bathrooms from Builders samples.
- Painted modern style 3 1/2" window, 3 1/2" door casings and 5 1/2" baseboards trim package.
- Flat finish slab interior doors.
- Chrome lever hardware.
- 9' ceiling height on main living.
- Fully painted 2 coats of latex paint in your choice of one colour from Vendors samples with second colour for trim and doors. Additional cost for dark colours.
- Optional finished basement including carpet flooring, pot lights, TV package, electrical as per plan.

PLUMBING FIXTURES AND ACCESSORIES

- Low flow low profile toilets.
- Ceramic wall tile to ceiling of bathtub enclosure.
- American Standard Studio Chrome faucets & Shower with Rain shower in ensuite.

- Oval free standing bathtub in ensuite.
- Kohler vault undermount kitchen sink.
- Pullout kitchen faucet.
- American Standard above counter boxe vessel sink in all bathrooms or choice of undermount.
- Custom shower in ensuite bath with tile and glass.

LANDSCAPING/ EXTERIOR

- 19' x 10/6' front balcony with wood decking and glass railing
- 10' x 6' rear balcony with wood decking and railings
- 8' x 10' rear interlock patio at ground floor.
- Rear wooden stairs.
- Horizontal fencing as per plan.
- Detailed landscaping plan.
- Asphalt driveway with Mellville slab pavers at entrance.
- Maintenance free exterior siding with stucco and board panels at front.
- Maintenance free aluminium soffits and fascia.
- Exterior lighting, frost free garage and rear hose bibs and electrical outlets

FRAMING

- Each home has a separate party wall structure with 5/8" and 1/2" drywall on 2" X 4" studs with absorption material between studs and 3/4" air space.
- Silent floor engineered joist system.

MECHANICAL/ELECTRICAL

- High efficiency forced air gas furnace with central air conditioning.
- Gas outlet for stove and BBQ on rear balcony.
- Pre-wired for 1 telephone and 3 cable.
- Valence lighting under kitchen cabinets.
- Decora white light switches and plugs.
- Par 20 50W Halogen pot lights throughout as per plan.
- Rough in alarm system.
- Pre-wired with electrical, cable, and structure for wall mount flatscreen TV as per plan.
- Double-glazed thermal windows and patio doors, as per plan.
- Window placements throughout all floors as per plan.
- Sectional glass panel garage door.

ADDITIONAL INFORMATION

- All exterior materials, elevations and colors are architecturally controlled and not subject to change by purchasers.
- One year Construction Warranty. Seven-year Tarion New Home Warranty.
- All plans and specifications are subject to change without prior notice. E&O.E.